

Organic and Symbiotic Fertilization of Tomato Plants Monitored by Litterbag-NIRS and Foliar-NIRS Rapid Spectroscopic Methods

Elena Baldi¹, Moreno Toselli¹, Giorgio Masoero^{2,*}, Marco Nuti³

¹Dipartimento di Scienze e Tecnologie Agro-Alimentari, Università di Bologna, Italy

²Accademia di Agricoltura di Torino, Torino, Italy

³Scuola Superiore Sant'Anna, Pisa, Italy

Abstract

Rapid analyses methods for the assessment of soil microbiota are lacking. In a commercial farm tomato plants were subjected to different fertilization strategies: 1. mineral Control (C); 2. Organic amendment (O); 3. Organic amendment + Micosat F © biofertilizer (OM). A first rapid method (Litterbag-NIRS) concerned hay litterbags coupled with a smart SCiO™ device. A second method (Foliar-NIRS) used the same device on the leaves. The plants showed positive responses to the amendment and biofertilization in the yield: C 60.5.1 t ha⁻¹ vs. 70.8 in O (+17%) and 74.2 in OM (+23% from C and + 5% (P 0.08) from O). The use of Litterbag-NIRS fingerprinting, completed with litterbags phenotyping and elaborated with a multivariate support vector machine classifier provided a similar knowledge to that obtained from microbial and chemical analyses of the soil. The reason for this response is that the analyses were embedded in the Litterbag-NIRS at medium-high precision. A polydromic function was hypothesized in order to disentangle the activities of different soil microbial populations from each other. The organic amendment delayed the functionality of the rapid r-strategist microbial populations, but at the same time activated slow k-strategists to intake the walls of the hay inside the litterbags. In this sense, the Litterbag-NIRS test can provide an effective "swamp" of the microbial fertility of the soil. Briefly, the Litterbag-NIRS coupled with Foliar-NIRS accounted for 95% of the average yield results, and both are therefore recommended for a rational assessment of microbial soil fertility.

Corresponding author: Giorgio Masoero, Accademia di Agricoltura di Torino, Via A. Doria 10, 10123, Torino, Italy.

Citation: Elena Baldi, Moreno Toselli, Giorgio Masoero, Marco Nuti (2020) Organic and Symbiotic Fertilization of Tomato Plants Monitored by Litterbag-NIRS and Foliar-NIRS Rapid Spectroscopic Methods. Journal of Agronomy Research - 3(1):09-26. <https://doi.org/10.14302/issn.2639-3166.jar-20-3363>

Running title: Litterbag-NIRS and Foliar-NIRS model in symbiotic tomato

Keywords: Amendment, Biofertilizer, Tomato, Litterbag-NIRS, Foliar-NIRS, SCiO™

Received: May 05, 2020

Accepted: May 10, 2020

Published: May 12, 2020

Editor: Abubaker Haroun Mohamed Adam, Department of Crop Science (Agronomy), College of Agriculture, Bahri University- Alkadaru- Khartoum -Sudan.

Introduction

Soil fertility, usually defined as the ability of a soil to promote plant growth and yield by integrating different soil functions¹ including nutrient availability, microbial activity and physical properties is fundamental for determining the productivity of all farming systems. Consequently, the knowledge of chemical, physical, and biological properties of a given soil is fundamental to reach a high standard production. Chemical parameters of the multifaceted soil fertility can be predicted approximately through an NIRS examination of samples in laboratory^{2, 3, 4} or directly in a field in a precision agriculture framework⁵. However, information on chemical fertility is useless if it is not combined with the knowledge of the microbial fertility of the cultivated soil. Increasing interest in microorganisms, such as endophytes, symbionts, pathogens and plant growth promoting rhizobacteria, was observed in the literature, while less attention was paid to the larger community of soil microorganisms, or soil microbiome, which may have more far-reaching effects. Each organism in the community of soil microorganisms acts in coordination with the overall soil microbiome to influence plant health and crop productivity⁶.

The use of litterbags is a technique that has long been adopted in soil studies on the evolution of microfauna in the bulk soil⁷. However, there is still a lack of rapid measurement techniques that can assess the microbial status of cultivated soils. The integrated use of NIRS and litterbag techniques could be a functional and rapid solution, as demonstrated by the fact that a change caused by a biofertilizer is reflected in the biochemical functioning mechanisms, and that such a change can be easily testified⁸. The coupled use of these two techniques (intended as a quality evolution of the litterbags swamps and not as mass decay), can be modeled as a valid fingerprinting of the studied field conditions, a process that results in data validation and predictive models (such as the random forest model algorithm). Furthermore, this combination technique could be used as a rapid and cost-efficient method, especially when compared with more complex methods, such as molecular metabarcoding, which is time consuming and expensive, as well as requiring a great deal of knowledge for the data analysis⁹.

Rapid predictors of yield are necessary tools to advance biofertilizer tuning and management. Classic microscopic techniques are usually necessary for arbuscular mycorrhizal (AM) studies in this sector¹⁰ and were recently improved through molecular techniques thanks to semi-automated digital image analyses, that are used to measure root length and fungal hyphae of dense mycelia¹¹. However, fungal-plant phenotypes are only weakly related or even not related to yield. For example, the correlation between AM and yield in fifteen species grown in pots, after elimination of leeks as an outlier, shifted from +0.60 ($P \leq 0.018$) to -0.16 ($P \leq 0.58$)¹². In a study on potato, treated twice with four commercial AM (*Rizophagus irregularis*) inoculants¹³, root length colonization was measured 120 days after planting, and a correlation between root length and yield of +0.31 ($P \leq 0.18$) was observed.

In a two-year project based on maize field trials¹⁴ it was concluded that just a few rapid NIRS analyses of litterbags and leaves, together with foliar pH measurements, are able to explain over 87% of the variation in yield from biofertilized or non-biofertilized fields. Validation of the spectroscopic and foliar pH model was carried out on a different biofertilized cultivar, which provided five AM sources. The yield results expressed negative symbiosis effects, and a tendential negative response to bio-fertilizers was correctly predicted in 84% of the cases in the negative quadrant ($P \leq 0.0012$). The results of the rapid analyses were confirmed to be correlated to maize quality¹⁵ and to potato yield⁶.

The aims of the present experiment are to confirm the Litterbag-NIRS and the Foliar-NIRS methods in a different species under soil microbial enrichment, and to search spectral correlation with biochemical parameters of the soil and with the phenotype of the litterbags in order to extend the "model learning" of the statistical analyses applied to soil microbial fertility.

Experimental Procedure

A field trial, aimed at evaluating the response of tomato plants to a regeneration of the mineral soil (C), as a result of using an organic amendment (O), and by adding a biofertilizer complex with a mycorrhizal source (OM), was conducted in an over utilized soil. The Litterbag-NIRS method was used, together with

chemical analyses, to testify, by means of fingerprinting, the microbiological activities of the treatments in the electromagnetic spectra.

Material and Methods

Site Description and Treatments

The trial was conducted on a commercial farm in the Padana Plain (44°35'19"N 12°00'43"E) on the Heinz 1301 tomato cultivar. Plantlets were transplanted at the third-fourth true leaf stage on April 17, 2018 and grown in a double row with a distance between plants of 40 cm in the row, for a total 33000 plants ha⁻¹ in a plot where tomato was also grown in 2017.

The soil in which the experimentation was carried out was characterized by a clayey-silty texture and was plowed during the winter. Before transplanting, 800 kg ha⁻¹ of organic amendment (40% P₂O₅; 3% Organic N; 4% K₂O; 4% organic C; 26% fulvic acid; 9% humic acid; 10% SO₃, 1% Mn; 1% Mg) and 2 q ha⁻¹ of an organo-mineral fertilizer (10% N; 12% P₂O₅; 7% K₂O; 2% MgO; 16% SO₃; 0,5% Fe; 0.01% Zn; 0.1% B; 7,5% organic C; 3% humic + fulvic acid) were applied; 10 days after transplanting, 1.8 q ha⁻¹ calcium nitrate (15% N; 26% Ca O) was supplied.

During the experiment, the following fertilization strategies were compared.

C - mineral fertilization: supplied, by fertigation, at transplanting and 4 times during the season for a total 138 kg N ha⁻¹; 107 kg P₂O₅ ha⁻¹, 110 kg K₂O ha⁻¹;

O - organic fertilization: supply patented by Demetra Italia S.R.L, organic fertilizers^{a,b} applied by fertigation at transplanting and 6 times during the season for a total of 74.5 kg N ha⁻¹; 62 kg P₂O₅ ha⁻¹, 47 kg K₂O ha⁻¹;

OM - organic fertilization + Micosat (M): at transplanting, plantlets were dunked for 3 hours in a Micosat-MO^c (5 kg ha⁻¹) + Nutribacter^d (2 kg ha⁻¹) solution. In addition, the Micosat MO was fertigated 3 times at 2 kg ha⁻¹, The plants were fertilized as described for O.

- ^a Soltermax P (an activator of the rhizospheric biota): a yeast extract with humic substances, fulvic acids, adhesion promoters N and P; Composition : water soluble nitrogen (N) 5 %,

organic nitrogen (N) 0.7%, P₂O₅ 15%, organic carbon (C) 9%.

- ^b Vegater (an activator of the rhizospheric biota): yeast extract with humic substances, fulvic acids, essential vegetal AA; Composition : organic nitrogen (N), 2 %, organic carbon (C) 24%.
- ^c Micosat MO (composition per 100 g): 10 g of finely ground cultivated *Sorghum sudanensis* roots, containing spores and ifae of *Funneliformis coronatus* GO01 and GU53, *F. caledonium* GM24, *F. intraradices* GB67 and G32, *F. mosseae* GP11 and GC11, *F. viscosum* GC41; saprotrophic fungi: *Streptomyces* spp. ST60, *Streptomyces* spp. SB14, *Streptomyces* spp. SA51, *Beauveria* spp. BB48, *Trichoderma viride*, *Trichoderma harzianum* TH01, *T richoderma atroviride* TA28, *Trichoderma* spp.; rhizosphere bacteria: *Bacillus subtilis* BA41, *Pseudomonas fluo-rescens* PN53, *Pseudomonas* spp. PT65 and *Pochonia chlamidosporia*, in a relative percentage of 40% crude inoculum and 21.6% bacteria and saprotrophic fungi.
- ^d Nutribacter: bacterial multiplying activator; Composition Nitrogen (N) organic soluble in water 3 %; Organic carbon (C) 15%

A row was used for each treatment for sample collection and 4 blocks in each row were defined in order to obtain replicates.

Litterbag Set Up and Properties

One month after transplanting, 12 litterbags per treatment were buried at a depth of 10 cm (Figure 1). Each litterbag was filled with hay for small animals ("Vita Verde Small Animal Alpine Hay", by Vitakraft pet care GmbH & Co. KG, Bremen, Germany) ground to 3 mm. About 3.5 g of hay was packed into half empty 10x10cm square polypropylene nets (1.5 mm mesh), which were resealed using 4 staples, and a plastic label was added for identification and for easiness of finding purposes. Four litter bags from each treatment were picked in two periods, at 56 days (A) and at 92 days (B), dried at a mild temperature, gently cleaned and preserved at room temperature until delivery. The brushed litterbags were opened and the surfaces of both sides were examined, in reflectance mode, through a magnetic spacer capsule, measuring 9*40 mm, of a smart miniaturized NIRS web-based wireless spectrophotometer (SCiO v. 1.2, Consumer Physics, Tel



Figure 1. Planting of the litterbags.

Aviv, Israel) in the 740-1070 nm range. One spectrum was acquired on each side of the litterbag.

Chemical and Biological Analyses of the Soil

In the same days as the litterbag sampling, soil was sampled at a depth of 2-20 cm to measure the nitrate (NO_3^- -N) and ammonium (NH_4^+ -N) concentrations and microbial biomass activity. Nitrate and N-NH_4^+ were extracted from 10 g of soil using a solution of 100 mL of KCl (2 M); samples were shaken at 100 rpm for 1 h and, after soil sedimentation, a limpid solution was collected and stored at -20°C until analysis, which was performed with an auto analyzer (Auto Analyzer AA3; Bran+Luebbe, Norderstadt, Germany). Microbial respiration was measured using the substrate induced respiration (SIR) method¹⁷ on 50 g of fresh sieved soil (diameter of 2 mm), placed in a 250 ml glass jar and equilibrated at room temperature for at least 24 hours. The samples were then mixed with 200 mg of glucose and incubated at 25°C for 3 hours. The accumulation of CO_2 was measured using an IR gas analyzer (Inova 1302, Luma Sense Technologies A/S, Ballerup, Denmark). CO_2 concentration was converted into microbial carbon according to¹⁷.

Data Handling and Statistical Analysis

The field data replicates were tested for a pairwise comparison by means of the Friedman test for paired samples or by the Kruskal-Wallis test for unpaired samples, using the StatBox V6.5 package (Grimmer Logiciels, Paris, France). Meanwhile, a linear two-way model, with treatment and period, was fitted to the soil and to the chemical variables and foliar composition

traits of the litterbags by means of the SAS 9.01 package (SAS Institute, Cary, NC, USA).

Chemometrics of the 331-point NIR spectra was performed using the SCIo Lab proprietary software, by means of a classification procedure based on a random forest algorithm. The reflectance spectra were mathematically transformed as standard normal variates, Log and 1st derivate, and the classification then produced AKA (as known as) confusion matrices according to a six treatment * period or three treatments (final period). The method requires numerical homogeneity between the compared classes, and a probability vs. threshold of 1/6 or 1/3 was tested using the online version of Med-Calc

The chemical composition of the litterbag residues was predicted using a Perkin Elmer IdentiCheck TM instrument (714-3333 nm), and the widest spectra were fed to equations established on twelve species of crops, analyzed at four stages¹⁸. The average results of each treatment were used to calibrate the NIR SCIo spectra of each constituent using the partial least square (PLS) procedure of the WinISI II v1.04 (FOSS NIRSystem/Tecator, Infrasoft International, LLC) software on the imported and 1st derived spectrum; cross-validation was applied and elimination of the outliers was permitted with two passages at $t = 2$.

The composition of the fresh tomato leaves was predicted, as indicated in the *Sorghum sudanensis* mycorrhizal paper¹⁹.

In order to compare the spectroscopic features with the body of the classificatory information provided

by the chemical variables pertaining to the soil and leaves, a modern classifier method, that is, the support vector machine (SVM), provided in the XLStat 2019.4.1 (Addinsoft) package, was used.

A final PLS model, based on the group averages of fifteen independent variables - 10 from the soil and 5 from the leaves - was performed for the yield with the StatBox software, using 2 latent components.

Results

Yield

The supply of organic fertilizer alone (O) or in combination with the microorganism (OM) induced an increase in the tomato yield, in comparison with the mineral fertilization (C) (Table 1), while the supply of the microorganism induced a slightly higher (4.9%, $P = 0.08$) yield than the organic fertilization (Table 1).

Soil and Litterbags

The two forms of mineral N measured in the soil were highly correlated to each other ($r=0.94$), but were interactively modulated by the organic amendment (Table 2), at a very high level, and the results are therefore reported using a Log scale (Figure 2). The supply of organic fertilizers alone or in combination with Micosat induced an increase in both forms of mineral N in the soil on both sampling dates. However, at day 92, the NH_4^+ -N values were similar between treatments, while NO_3^- -N was higher in the organic amended plots (O) than in the control one (C) (Figure 2).

Soil microbial carbon (Table 2; Figure 3) decreased from point zero (SIR 362) to point A-56 d (181; -50% from zero) and to point B-92 d (142; -21% from B); the decreasing trend was not linear and accelerated in the control and in the OM treatments, showing an interaction *vs.* O (Figure 2; Table 2).

Micosat treated plants induced a decrease of protein of 19% *vs.* C and of 12% *vs.* O; in addition, the total digestibility was reduced by 7%. The components of the cellular wall were mainly affected by the microbial supply since their concentration raised. In detail the non-digestible NDF increased by 29% and the ADF was enhanced by +17%, which resulted in a rise in the Crop Maturity Index of 94% *vs.* the C pairing with the O treatment (Figure 4).

Figure 5 summarizes the covariation of the 19

variables active on the litterbag template with the factor scores of the three treatments. On the left side, OM was associated with yield, microbial C (SIR), NDF, crop maturity index, NO_3^- -N, undigestible NDF, NH_4^+ -N, gross energy, cellulose and crude fiber. On the right side, C was associated with protein, ash, digestible NDF, total digestibility %, lipids, ADL and free sugars. The O treatment was clearly secluded in an intermediate position and associated with hemicellulose.

As far as the probable microbial active populations are concerned, the OM soils were associated with a type of rapid r-strategist that was able to oxidize glucose into CO_2 , as pointed out by the high SIR values and the concentration of the less available cellular wall components. Conversely, the C soils benefitted from the slow k-strategist populations that had preserved the most labile substances of the hay in the litterbags.

Correlation of the Soil Substrate Induced Respiration (SIR), NO_3^- -N and NH_4^+ -N with the Litterbag-NIRS

The average reflectance of the C litterbags (Figure 7) was 0.293, a value that was exceeded by O (0.329, +12%) and by OM (0.359, +23%).

The calibrations were all positive (Table 2). Microbial C was predicted with $R^2=0.73$ (Figure 8); moreover, NO_3^- -N was also well predicted by means of NIRS (0.84) and more than the NH_4^+ -N (0.66).

Comparison of the Litterbag-NIRS Method with the Laboratory Analyses

The fingerprinting of the treatments (C, O, OM) in the two periods (A, B) from the Litterbag-NIRS method was highly significant with 63% on average (Table 3); a minimum value of 40% (*vs.* threshold 17%) was observed in C-A and OM-B, while C was recovered more constantly, with a maximum of 87% at period A, and this was confirmed with 71% at period B. When the four biochemical variables (litterbag basal respiration, soil respiration, nitrate, ammonium) were run into the support vector machine, the results of the classification were similar at around 71%. Based on the 18 NIRS chemical predictions (Table 3, point 3), the classification reached a similar average value of 63%.

¹The variables were: litterbag basal respiration, SIR of the soil, nitrate and ammonium, repeated at periods A and B. Period A refers to 56 d from sowing

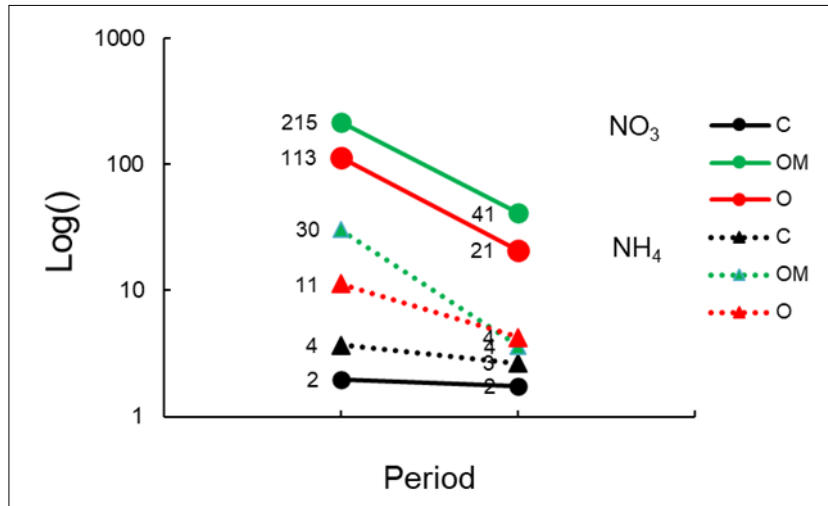


Figure 2. Log plot of the NO₃⁻-N (continuous line) and NH₄⁺-N (dotted line) in the soil of the three treatments at the two periods (A: 56d; B: 92d).

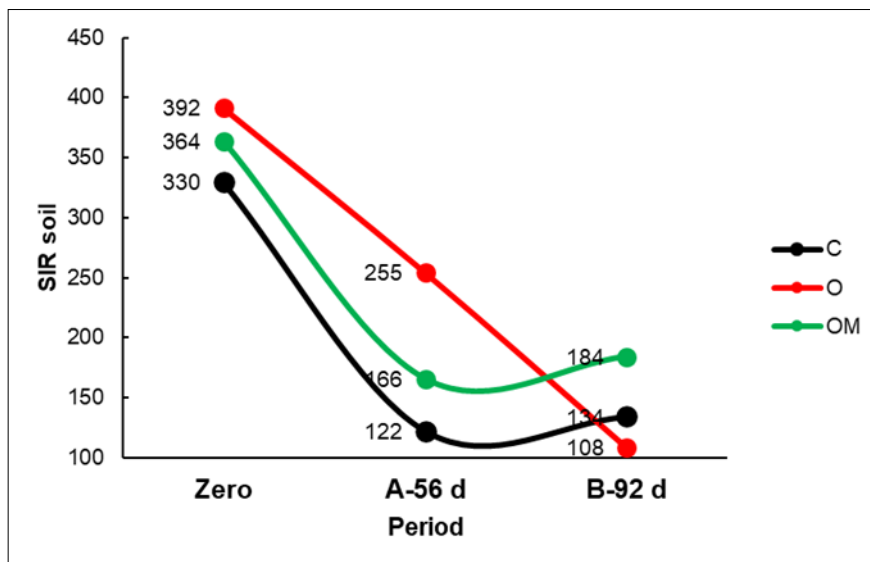


Figure 3. Plot of the Substrate Induce Respiration (SIR) in the soil of the three Treatments for the three periods (Zero; A: 56d; B: 92d).

Table 1. Effect of the fertilization treatment on yield.

	C	O	OM	O\C%	P	OM\C%	P	OM\O%	P
Means t ha ⁻¹	60.47	70.77	74.23	17.9%	0.05	23%	0.05	4.9%	0.08

Table 2. Analyses of the soil and litterbags at the two periods, where the litterbag constituents are ordered by increasing OM\C% values and the r-squares are cross-validated in the NIR SCiO spectra.

Soil analyses	Period ¹	Unit	C	O	OM	O\C%	P	OM\C%	P	OM\O%	P	R ² cv in SCiO ²
Microbial biomass	0	µg Cmic g ⁻¹ FW	329.6	391.6	363.9	19%	0.08	10%	0.56	-7%	0.15	np
Microbial biomass	A	µg Cmic g ⁻¹ FW	122.4b	254.6a	165.9ab	108%	0.02	36%	0.25	-35%	0.02	0.73
Microbial biomass	B	µg Cmic g ⁻¹ FW	134.3ab	108.5b	184.3a	-19%	0.43	37%	0.13	70%	0.03	
NO ₃ ⁻ -N	A	mg kg ⁻¹ DW	2.95c	112.60b	215.01a	3715%	0.00	7185%	0.00	91%	0.02	0.84
NO ₃ ⁻ -N	B	mg kg ⁻¹ DW	1.42c	20.92b	40.95a	1375%	0.00	2787%	0.00	96%	0.25	
NH ₄ ⁺ -N	A	mg kg ⁻¹ DW	3.51c	11.30b	30.47a	222%	0.00	768%	0.00	170%	0.02	0.66
NH ₄ ⁺ -N	B	mg kg ⁻¹ DW	2.71c	4.23b	3.61a	56%	0.02	33%	0.04	-15%	0.56	
Litterbag constituents												
Basal respiration	A	µg Cmic g ⁻¹ FW	3026	3623	4288	20%	0.95	42%	0.25	18%	0.95	np
Basal respiration	B	µg Cmic g ⁻¹ FW	1966	1587	1990	-19%	0.77	1%	1.00	25%	0.39	np
Protein	A&B	DW%	12.8	11.7	10.3	-8%	0.22	-19%	0.01	-12%	0.10	0.59
NDF digestibility	A&B	%	58.2	56.0	51.8	-4%	0.56	-11%	0.10	-8%	0.25	0.63
ADL	A&B	DW%	8.8	8.7	7.9	-1%	0.90	-11%	0.29	-10%	0.33	0.81
Lipids	A&B	DW%	3.1	2.9	2.8	-6%	0.37	-10%	0.15	-4%	0.53	0.76
Total digestibility	A&B	%	80.8	77.9	75.2	-4%	0.14	-7%	0.01	-3%	0.17	0.71
Free sugars	A&B	DW%	49.8	48.0	48.4	-4%	0.03	-3%	0.11	1%	0.62	0.78
digestible NDF	A&B	DW%	31.1	30.0	30.4	-3%	0.26	-2%	0.46	1%	0.71	0.71
Ash	A&B	DW%	16.3	15.4	16.2	-6%	0.49	0%	0.97	6%	0.52	0.78

Cellulose	A&B	DW%	23.0	22.7	23.5	-2%	0.84	2%	0.83	3%	0.68	0.92
Gross energy	A&B	MJ/kg	16.0	16.1	16.4	1%	0.40	3%	0.04	2%	0.17	0.77
Fiber Weende	A&B	DW%	16.0	16.6	16.6	4%	0.82	4%	0.82	0%	0.99	0.76
Hemi cellulose	A&B	DW%	12.3	12.7	13.2	3%	0.81	7%	0.57	4%	0.73	0.71
NDF	A&B	DW%	42.0	46.0	45.3	10%	0.06	8%	0.13	-1%	0.74	0.80
ADF	A&B	DW%	29.6	33.6	34.7	14%	0.13	17%	0.07	3%	0.67	0.67
non-digestible NDF	A&B	DW%	19.2	22.1	24.8	15%	0.14	29%	0.01	12%	0.16	0.71
Crop Maturity Index	A&B	Ratio	0.69	1.10	1.33	60%	0.03	94%	0.00	21%	0.22	0.84
Predicted C1M2 Micosat type												0.74

¹ The A period refers to 56 d from sowing and 20 d from placing the litter bags; the B period refers to 92 d from sowing and 56 d from placing the litter bags; A&B mixing of the litterbags from the A and B periods; ² np: not performed.

Table 3. Fingerprinting of the Treatments * Periods by using Litterbag-NIRS or the bio-chemical analyses.

Threshold 17%	C-A	C-B	O-A	O-B	OM-A	OM-B
Litterbag-NIRS	87%	40%	62%	71%	40%	75%
P (No. 20)	0.0001	0.0062	0.0001	0.0001	0.0001	0.0062
Support vector machine-V4 ¹	50%	50%	100%	75%	100%	50%
P (No. 4)	0.0789	0.0789	0.0001	0.0002	0.0001	0.0789
P (1 vs. 2)	0.0929	0.7170	0.1443	0.8739	0.0320	0.3256
Support vector machine-V18 (Litterbag composition)	25%	75%	100%	50%	75%	50%
P (No. 4)	0.6701	0.0020	0.0001	0.0789	0.0020	0.0789

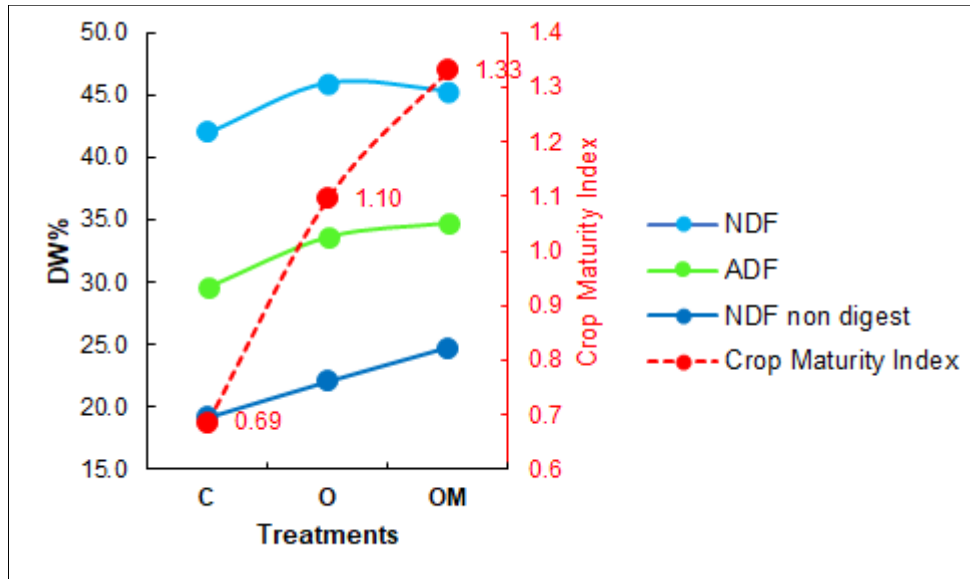


Figure 4. Selected features for the variation of the fiber components in the litterbags and their Crop Maturity index.

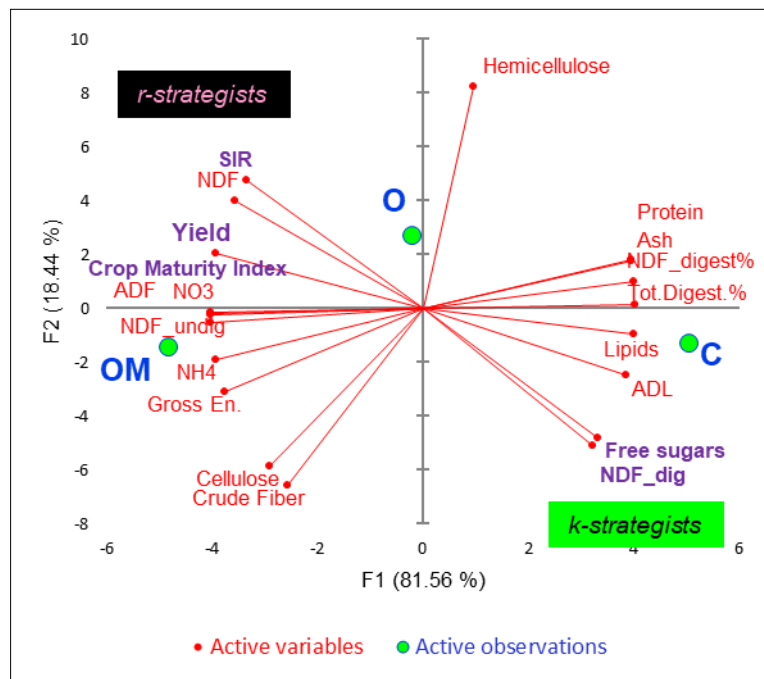


Figure 5. Principal Component analysis: plots of 19 active litterbag constituents and factor scores.

Table 4. Analyses of the leaves predicted by means of the Perkin Elmer NIRS (No. 87) and from the four spectral SCIO-NIRS signatures, like the Sentinel-2 bands¹

Leaf Constituents	Unit	C	O	OM	O\C%	P	OM\C%	P	OM\O%	P
Free sugars	DW%	44.51a	42.95b	43.01b	-3%	0.00	-3.4%	0.00	0%	0.88
Ash	DW%	6.95b	7.37a	6.74b	6%	0.22	-3.0%	0.22	-9%	0.00
Crop maturity index	Ratio	2.29a	2.20b	2.24b	-4%	0.02	-2.1%	0.02	2%	0.07
non-digestible NDF	DW%	29.83b	30.22a	29.66b	1%	0.15	-0.6%	0.15	-2%	0.00
Protein	DW%	8.16	8.04	8.12	-2%	0.66	-0.5%	0.66	1%	0.43
Lipids	DW%	1.28b	1.30a	1.28b	2%	0.71	-0.3%	0.71	-2%	0.01
Total digestibility	%	70.10	69.93	70.07	0%	0.86	0.0%	0.86	0%	0.22
Cellulose	DW%	24.93a	23.88b	24.93a	-4%	0.99	0.0%	0.99	4%	0.00
Gross energy	MJ kg ⁻¹	17.36b	17.38a	17.38a	0%	0.02	0.1%	0.02	0%	0.87
NDF	DM%	47.27a	46.20b	47.34a	-2%	0.78	0.2%	0.78	2%	0.00
predicted pH	pH	5.08b	5.07b	5.11a	0%	0.06	0.4%	0.06	1%	0.01
Dry Matter	DW%	29.45ab	29.09b	29.60a	-1%	0.51	0.5%	0.51	2%	0.02
digestible NDF	DW%	24.58	24.57	24.73	0%	0.40	0.6%	0.40	1%	0.37
Fiber Weende	DW%	27.24	27.33	27.44	0%	0.14	0.7%	0.14	0%	0.43
pH measured	pH	6.25b	6.15c	6.34a	-2%	0.00	1.4%	0.00	3%	0.00
ADF	DW%	45.65c	47.85a	46.46b	5%	0.01	1.8%	0.01	-3%	0.00
NDF digestibility	%	43.31b	44.26a	44.13a	2%	0.03	1.9%	0.03	0%	0.74
ADL	DW%	8.13b	8.28b	8.41a	2%	0.02	3.4%	0.00	2%	0.29
S2 ¹ band -d9	Ref.	0.74b	0.72c	0.77a	-3.1%	0.00	4.8%	0.00	8%	0.00
S2 ¹ band -c8a	Ref.	0.77b	0.74c	0.81a	-3.2%	0.00	5.1%	0.00	9%	0.00
S2 ¹ band -c7	Ref.	0.75b	0.73c	0.79a	-3.4%	0.00	5.8%	0.00	10%	0.00
S2 ¹ band -b6	Ref.	0.67b	0.66b	0.72a	-1.0%	0.00	7.0%	0.00	8%	0.00
Hemicellulose	DW%	5.25b	3.94c	5.88a	-25%	0.00	12.0%	0.00	49%	0.00

¹ Like the Sentinel-2 EOS Satellite band: b6 (740-750 nm); c7 (773-793 nm); c8a (855-875 nm); d9 (935-955 nm).

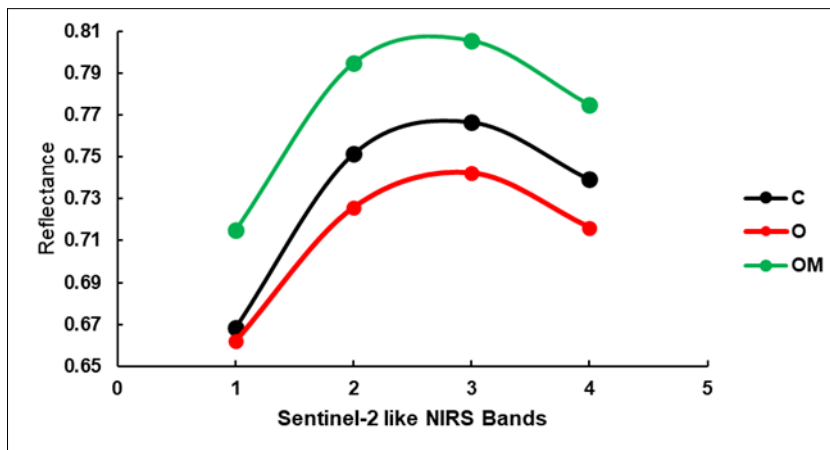
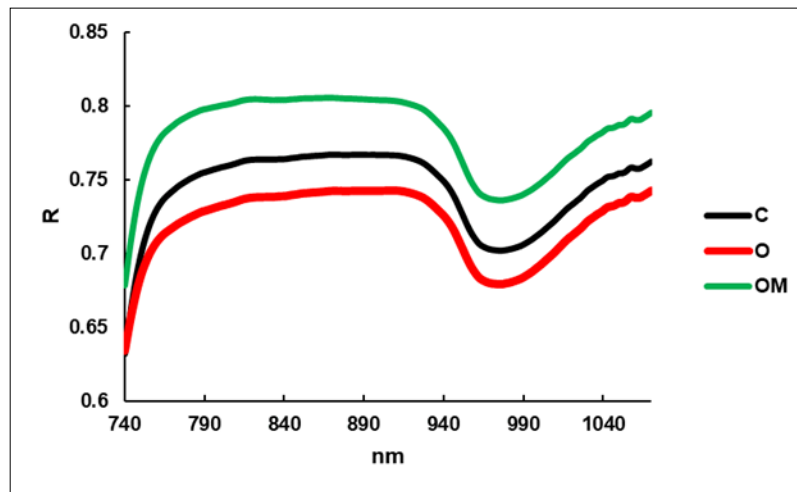


Figure 6. Average reflectance spectra of the leaves, upper face.

Table 5. Fingerprinting of the three Treatments (C, O, OM) from the foliar-NIRS and from a multivariate support vector machine classification of 19 predicted chemical variables and 4 spectroscopic ones.

33% threshold	C	O	OM
Foliar-NIRS	72%	85%	78%
P (No.20)	0.0002	0.0001	0.0001
Multivariate support vector machine	93%	100%	88%
P (No.20)	0.0001	0.0001	0.0001
P (1 vs. 2)	0.0844	0.0754	0.4058

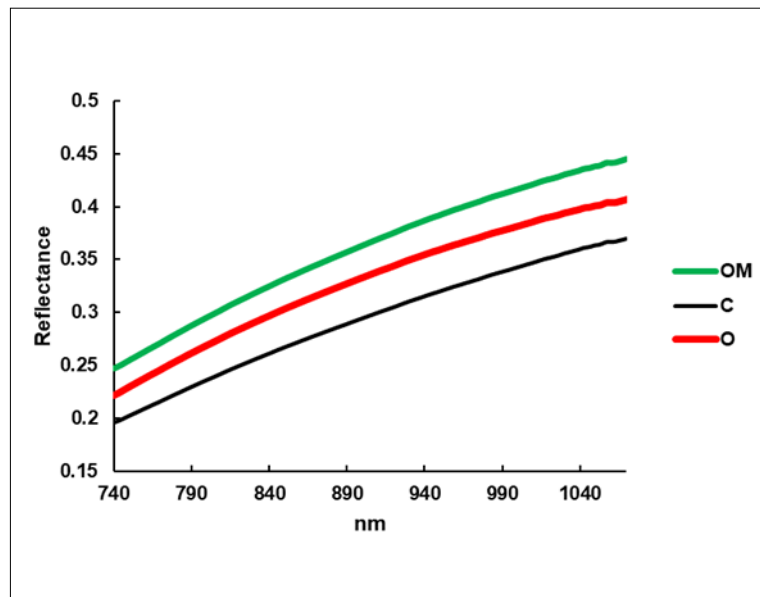


Figure 7. Average reflectance spectra of the litterbags.

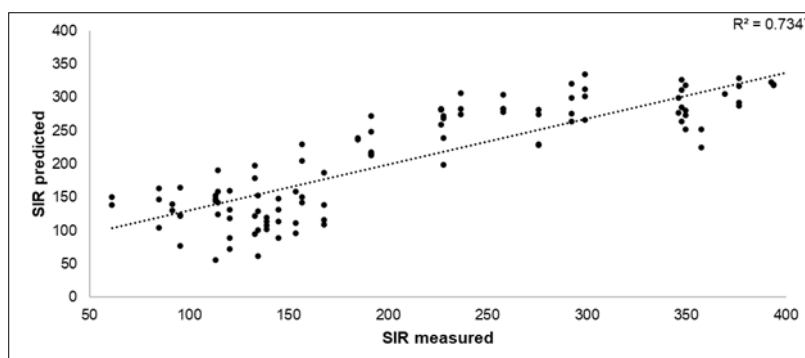


Figure 8. Scatterplot of the (Y) predicted \ (X) measured soil SIR ($\mu\text{g Cmic g}^{-1}\text{ FW}$), values from the Litterbag-NIRS.

and 20 d from placing of the litter bags; period B refers to 92 d from sowing and 56 d from placing of the litterbags.

Foliar-NIRS

The reflectance of the leaves (Figure 6) was higher than in the spectra of the degraded hay from the litterbags, and the 950 nm region showed the typical saddle-shape due to water absorbance. It should be noted that the lowest values were observed for the O group (0.721) and this was followed by the C group and then by the OM. This shape was confirmed when the three treatments were distinguished into the four S2-like NIRS bands, as shown in Figure 7. These variables appear at the bottom of Table 4 as the most important variables paired with the hemicellulose, ADF and NDF

digestibility, and they increased in the O and OM groups. The O treatment excelled in four components (ash, lipids, non-digestible NDF, ADF). The increase in the fiber components in the OM treatment was limited to +1.8% (ADF) and +3.4% (ADL), but the Crop Maturity Index contextually appeared reduced by 2.1%.

¹ Like the Sentinel-2 EOS Satellite band: b6 (740-750 nm); c7 (773-793 nm); c8a (855-875 nm); d9 (935-955 nm).

Comparison of the Foliar-NIRS Method with the Laboratory Analyses

A valid fingerprinting of the treatments was obtained from the NIRS of the leaves, that is, 78% on average, compared to similar values of 94% for the SVM

Table 6. Partial least squares regression of the variables from the soil, litterbags and leaves on the yield.

Period	Soil, Litterbag	STD Coeff.	Index	STD Coeff.	Index
Soil					
A	NO ₃ ⁻ -N	0.34	100%		
A	NH ₄ ⁺ -N	0.27	80%		
A	SIR	0.17	50%		
Litterbags					
A	Respiration	0.03	9%		
A	% Litterbag	-0.22	-65%		
B	NO ₃ ⁻ -N	0.13	38%		
B	NH ₄ ⁺ -N	0.03	9%		
B	SIR	0.14	42%		
B	Respiration	-0.06	-17%		
B	% Litterbag	0.02	5%		
Leaves					
B	% Foliar NIRS			0.88	100%
B	b6 ¹			0.39	45%
B	c7 ¹			0.13	15%
B	c8a ¹			0.12	13%
B	d9 ¹			0.11	12%
R ²		0.88		0.95	

Table 7. Multiple regression model of the yield from the Litterbag-NIRS and Foliar-NIRS.

	Coefficients	STD	Partial r ²	Total R ²
Constant	-116.06			
% Litterbag-NIRS Fingerprinting (C, M, OM)	49.23	1.28	0.45	0.45
% Foliar-NIRS Fingerprinting (C, M, OM)	196.63	1.74	0.50	0.95

Table 8. Prediction of the Control (C) or biofertilized (M) status of the litterbags from 14 previous models

	C (C&O)	M (OM)	C / M
Fingerprinting%	68%	34%	+97%
P	0.0024	0.043	0.004

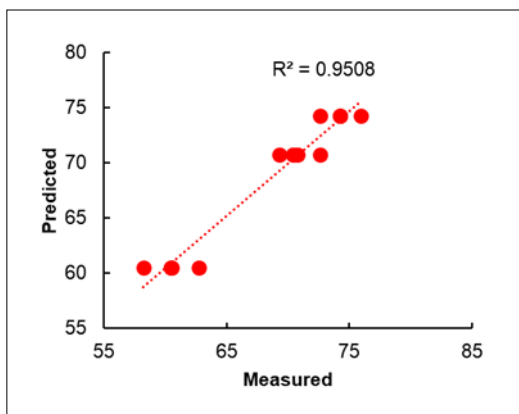


Figure 9. Bilinear regression of the Yield on the %Fingerprinting of the litterbags and leaves.

classification, which involved a pool of 23 leaf variables (Table 5).

Bottom-up Approach: Predictability of the Yield from this Experiment

The most important below-ground variable for yield (Table 6) resulted to be the NO_3^- -N variable measured in the soil, more so in the first period (index 100%) than in the second one (38%), although the N-NH_4^+ variable showed a similar importance, although limited to the first period (80%). Microbial C showed a limited incidence (50% and 42%). The fingerprinting of the litterbags only appeared important in the first period (-65%) and showed an inverse relationship: low fingerprint *vs.* high yield, and *vice versa*. As far as the foliar-NIRS is concerned, a closer relationship can be observed, and the R^2 rose to 0.95.

¹ Like the Sentinel-2 EOS Satellite band: b6 (740-750 nm); c7 (773-793 nm); c8a (855-875 nm); d9 (935-955 nm).

When only the Litterbag-NIRS and Foliar-NIRS methods were combined in a multiple regression model, similar results could be obtained, in terms of r-square (0.95), with partial r^2 values 0.45 from the Litterbag-NIRS and 0.50 from the foliar-NIRS (Table 7; Figure 9).

Top-down Approach: Predictability of the Biofertilized (M) or Control (C) Status From Previous Models

The top-down application of 14 previous Litterbag-NIRS models for the assignment of the status

of biofertilized (M) or untreated Control (C) (Table 8) showed that the C status was significantly predicted (68%), while the M status was significantly misclassified, with only 34% of fingerprinting. Thus, on the basis of the previous knowledge of the litterbags, 2/3 of the OM were not recognized as being M. This suggests the presence of an original type of microbial litterbag type, while the control was compliant with the previous known types.

Discussion

From the present experiment we were able to observe an increase of tomato yield by 18% thanks to the use of organics amendments able to partially restore soil sickness due to several successions of tomato cultivation. Moreover, the activity of the organic amendment was little (+5%) enhanced by the supply of the biofertilizer complex. It should be also noted that the control yield (60.5 t ha^{-1}) was very low for the area that is usually characterized by production ranging around 65 to 95 t ha^{-1} .

As summarized in the model reported in Table 7, a greater availability of both N species in the first period and of NO_3^- -N in the second period was the lever that led to a higher yield; it should be noticed that these two parameters had a high CV of around 130%; microbial C was the least variable parameter (CV= 48%), but it did not show covariation with the treatments, even though it registered the highest value in the first month. Microbes stimulated by organic amendments are only aerobic,

thus an increase in microbial biomass could be expected. However, the response could be the result of a complex polydromic function, resulting from the multitude of autochthonous microorganisms and as a response to the glucose added to the soil in the test. Soil microorganisms have a great potential to adaptively vary their growth traits, according to the energy source and its availability²⁰. Although, according Fontaine *et al.*²¹, a wide range of microbial types are present in soil, only a few of them can adapt to the dominant soil organic resource, while the others remain dormant i.e. in a viable but non-culturable state. After fresh organic matter (FOM) is supplied to soils, or vital newborn roots start to develop into the soil, many dormant microorganisms are triggered into activity, and this leads to dramatic changes in the structure of the microbial community. It is important to recall that at first time FOM specialized microorganisms, which are commonly classified as r-strategists, adapt to rapid growth intervals, become dominant. After substrate exhaustion, r-strategists die or become dormant because they are unable to use soil organic matter (SOM). At that point other microorganisms labelled as k-strategists occurred to attack SOM. They grow slowly and only dominate in the last stages of FOM decomposition. In the present experiment we have observed a general reduction of the microbe r-strategist from point zero (SIR 362) to point A-56 d (181; -50% from 0) and to point B-92 d (142; -21% from B), this mainly because these microbes easily attack the glucose added to soil microbial biomass determination. However, a polydromic function must describe level and evolution of SOM and microbes at different times. What did the O and OM treatments do that was different from the Control? The C and OM treatments lost more rapidly the r-strategist population vs. O, which only collapsed in the final period. The SIR technique is not enough to distinguish between the C and OM treatment; consequently, it is necessary to take into consideration the evolution of the litterbag composition which more closely reflects the population of the slow k-strategists that were able to attack the cellular walls of the hay in litterbags. Hence, it is possible to observe, in Figure 4, that the crop maturity index of the degrading hay increased to a great extent as the digestible fraction of the NDF reduced. As far as the hypothesis of a polydromic function is concerned,

the organic amendment delayed the functionality of the r-strategists, but at the same time activated the k-strategists to feed the walls. Something similar occurred for the biofertilized OM treatment which, however, antagonized the rapid microbes at the control (C) level early on, as clearly shown by the presence of the saddle in Figure 2.

A new finding of hay litterbags has emerged concerned their intrinsic basal respiration. In fact, the values were nearly tenfold higher than the SIR of the soil at period zero. Saprnov and Kuzyakov²², in a laboratory, separated the soil CO₂ flux into the root respiration of maize plants and the respiration of the rhizosphere and nonrhizosphere microorganisms, and concluded that the contribution of the roots alone was 8–19%, while that of the non-rhizosphere microorganisms was 51–82%.

The results of the present experiment agree with previous results obtained from Litterbags-NIRS and from Foliar-NIRS in biofertilizer experiments. The anomaly of the pH - which increased by 3% and 14% - instead of reducing by about 1-3%, as usually observed in other experiments involving AM^{23, 24, 25} - may be due to an excessive delay between the sampling and pH measurement, but this cannot have affected the general structure of the leaves in the optical path traversed by the NIR beam. Notice that the reflectance of the leaves measured by the researchers' version of the SCiO device (linked to a repository of collections and spectra providing a downloading management) is more useful than a Leaf Chlorophyll Meter, which has a similar price, when the influence of the factors exceeded from the chlorophyll - protein domain, for example, when an experiment is aimed at modifying ontogenic traits, in particular the development of the cell walls and to vary the Crop Maturity Index or similar complex traits^{18,26}. The relationship with the Sentinel-2 b6 band, which on average explained 39% of the yield variations, is interesting. Therefore, this tool could be proposed for remote agriculture purposes.

The most meaningful result of the current experiment was that obtained from proximal spectroscopy, which established significant and useful correlations of several components of the litterbags with the short region of the NIR rays. The development of

spectroscopy led to concrete interest in portable NIR devices^{27, 28}, but especially in SCiO systems, for the prediction of the horticultural products quality²⁹, to maize single kernel quality³³ and the application of NIR tomoscopy to animals³⁰ and the application of NIR tomoscopy to animals³⁰. This Foliar-NIRS method therefore remains an underestimated tool for the rapid phenotyping of plants, especially when the relationships between plants and AM are studied, contextually with a lowering of the foliar pH^{14, 19, 24, 25}.

Conclusion and Perspectives

According to van Veen *et al.*³¹, the greatest problem of inoculating soil for beneficial purposes is the general obstinacy of the soil ecosystem, which normally acts as a buffer against any incoming microorganisms. From the perspective of the attackers, provided by strong ecological selectivity, this recalcitrance of the system can be overcome, and the selected organism can become established and active. The greatest chance for the success of microbial introductions for unselected or poorly selected inoculants might be when the normal homeostasis of the system is (temporarily) disturbed, as this can result in an alleviation of anti-invader pressure. In our opinion, when considering the minimal dose\effect results that have sometimes been obtained in real fields, that is, far from artificial (and often aseptic) sterile laboratory conditions, and with very high (non-economic) doses, we can hypothesize a collateral multi-purposes player that restores some strategic functionality that is blocked in the soil. We must draw inspiration from the Van Nood *et al.*³² fecal transplant model first to solve the deadly recurrent *Clostridium difficile* diarrhea in humans. In the current experiment, the complex nature of the *crude inoculum* inherent to the commercial microbial consortium Micosat F may have catalyzed a symbiotic profile, as testified by the yield results and by the phenotype effects on the tomato plants, and foreseen for the selective degradation of the litterbags. The debate on multitude (quantity) vs. handful (quality and variability) remains open. But the right answers to a good question are in the normal soils. As far as rapid methods are concerned, there is only one answer: when the aim of an experiment is to obtain knowledge on the effect of an organic amendment or a biofertilizer complex, considering a multitude of

unknown soil microorganisms, it is easier and quicker to scan litterbags and leaves than to perform laborious analyses of the roots, soil and leaves. The close correlation between the short NIR SCiO spectra of the cell wall compounds and of other components of the litterbags is further confirmation of the results of the first paper of the litterbag series⁸. However, this paper can open new scenarios pertaining to the planning of biofertilizer \ bioinoculants experiments and the interpretation of the results, whether in bottom-up or top-down mode, as Litterbag-NIRS models will grow from experiments and symbiotic field-testing operations. In short, SIR alone cannot fully explain the soil fertility orchestrated by a complex and very assorted Biofertilizer: traces of the microbial work and footsteps can be found - almost *archaeologically*- in the NIR spectra of the litterbags and from the inherent substances, *in primis* in the fibers declared to be digestible, such as in rumen, as well as in the free sugar variations of degrading hay. Rumen obviously can host only anaerobic microbes, but the soil has equivalent aerobic priming and factors for SOM attack, where AM are the corner stones for long-life microbial fertility. Rapid spectroscopic analyses, and Litterbag-NIRS in particular, are therefore recommended for a rational assessment of microbial soil fertility before and during the use of biofertilizers or bioinoculants.

Acknowledgments

Thanks to Roberto Dalpozzo (Demetra Italia S.r.l., Castel Guelfo, Italy), Fabio Pelliconi (Consorzio Agrario di Ravenna, Cotignola, Italy) and Giusto Giovannetti (CCS-Aosta S.r.l., Quart, Italy) for the valuable support to ideation and execution of the experiment.

References

1. Swift MJ, Palm CA. (2002) Soil fertility as an ecosystem concept: A paradigm lost or regained? In: Accomplishments and changing paradigm towards the 21st Century. *Proceedings of the 17th world congress of soil science*, Bangkok, Thailand 2002 Aug (pp. 14-21).
2. Genot V, Colinet G, Bock L, Vanvyve, *et al.* (2011) Near infrared reflectance spectroscopy for estimating soil characteristics valuable in the

- diagnosis of soil fertility. *Journal of Near Infrared Spectroscopy* 19, 117-138.
3. Cécillon L, Barthès BG, Gomez C, Ertlen D, Génot V, Hedde M, Stevens A, Brun JJ. (2009) Assessment and monitoring of soil quality using near-infrared reflectance spectroscopy (NIRS). *European Journal of Soil Science* 60, 770-84.
 4. Jiang Q, Chen Y, Guo L, Fei T, Qi K. (2016) Estimating soil organic carbon of cropland soil at different levels of soil moisture using VIS-NIR spectroscopy. *Remote Sensing* 8, 755.
 5. Munnaf AM, Nawar S, Mouazen AM. (2019) Estimation of Secondary Soil Properties by Fusion of Laboratory and On-Line Measured Vis-NIR Spectra. *Remote Sensing* 11, 2819.
 6. Chaparro JM, Sheflin AM, Manter DK, Vivanco JM. Manipulating the soil microbiome to increase soil health and plant fertility. (2012) *Biology and Fertility of Soils* 48, 489-99.
 7. Dalias P, Mprezetou I, Troumbis AY. (2003) Use of a modified litterbag technique for the study of litter mixtures. *European journal of soil biology* 39, 57-64.
 8. Masoero G, Delmastro M, Cugnetto A, Giovannetti G, Nuti M. (2018) NIRS footprint of bio-fertilizers from hay litterbags. *Journal of Agronomy Research* 1, 22-33.
 9. Piazza G, Ercoli L, Nuti M, Pellegrino E. (2019) Interaction Between Conservation Tillage and Nitrogen Fertilization Shapes Prokaryotic and Fungal Diversity at Different Soil Depths: Evidence From a 23-Year Field Experiment in the Mediterranean Area. *Front. Microbiol.* 10, 1-20.
 10. Giovannetti M, Mosse B. (1980) An evaluation of techniques for measuring vesicular arbuscular mycorrhizal infection in roots. *New phytologist* 1, 489-500.
 11. Cardini A, Pellegrino E, Del Dottore E, Gamper HA, Mazzolai B, Ercoli L. (2020) HyLength: a semi-automated digital image analysis tool for measuring the length of roots and fungal hyphae of dense mycelia. *Mycorrhiza* 16, 1-4.
 12. Tran BT, Watts-Williams SJ, Cavagnaro TR. (2019) Impact of an arbuscular mycorrhizal fungus on the growth and nutrition of fifteen crop and pasture plant species. *Functional Plant Biology* 46(8), 732-42.
 13. Loján P, Senés-Guerrero C, Suárez JP, Kromann P, Schübler A, Declerck S. (2017) Potato field-inoculation in Ecuador with *Rhizophagus irregularis*: no impact on growth performance and associated arbuscular mycorrhizal fungal communities. *Symbiosis* 73, 45-56.
 14. Volpato S, Masoero G, Mazzinelli G, Balconi C, et al. (2019) Spectroscopic and foliar pH Model for Yield prediction in a Symbiotic Corn Production. *Journal of Agronomy Research* 2 (3), 1-18.
 15. Masoero G, Mazzinelli G, Balconi C, Locatelli S, et al. (2020) Spectroscopic Kernel Quality from a Symbiotic Corn Production. *Journal of Agronomy Research* 2 (4), 18-33.
 16. Volpato S, Masoero G, Giovannetti G, Nuti M. (2020) Arbuscular Mycorrhizal Biofertilizers sources in the potato (*Solanum tuberosum*) plant show interactions with cultivars on yield and litterbags spectral features. *Journal of Agronomy Research*, 2 (4), 10-17.
 17. Anderson J, Domsch K. (1978) A physiological method for the quantitative measurement of microbial biomass in soils. *Soil Biol. Biochem.* 10, 215-221.
 18. Tassone S, Masoero G, Peiretti PG. (2014) Vibrational spectroscopy to predict in vitro digestibility and the maturity index of different forage crops during the growing cycle and after freeze- or oven-drying treatment. *Animal Feed Sci Techn.* 194, 12-25.
 19. Masoero G, Peiretti PG, Cugnetto A, Giovannetti G. (2018) Raw pH fall-out as a sign of a mycorrhizal modifier of *Sorghum sudanensis*. *Journal of Agronomy Research* 1: (2), 1-11. ISSN: 2639-3166. DOI10.14302/issn.2639-3166.jar-18-2264. <https://openaccesspub.org/jar/article/815>
 20. Blagodatskaya EV, Blagodatsky SA, Anderson TH, Kuzyakov Y. (2009) Contrasting effects of glucose, living roots and maize straw on microbial growth kinetics and substrate availability in soil. *European Journal of Soil Science* 60, 186-97.

21. Fontaine S, Mariotti A, Abbadie L. (2003) The priming effect of organic matter: a question of microbial competition? *Soil Biology and Biochemistry* 35, 837-43.
22. Saponov DV, Kuzyakov YV. Separation of root and microbial respiration: comparison of three methods. *Eurasian Soil Science*. 2007 Jul 1;40(7):775-84.
23. Masoero G, Giovannetti G. (2015) In vivo Stem pH can testify the acidification of the maize treated by mycorrhizal and microbial consortium. *Journal of Environmental & Agricultural Sciences* 3, 23-30.
24. Masoero G, Cugnetto A. (2018) The raw pH in plants: a multifaceted parameter. *Journal of Agronomy Research*, 1: (2), 1-11.
25. Giovannetti G, Polo F, Nutricato S, Masoero G, Nuti M (2019) Efficacy of commercial symbiotic bio-fertilizer consortium for mitigating the Olive Quick Decline Syndrome (OQDS). *Journal of Agricultural Research*. 2 (1), 1-21.
26. Peiretti PG, Tassone S, Masoero G. (2015) Lipid maturity trend in crops as characterized by α -linolenic acid decay and by NIRS study. *Journal of Environmental & Agricultural Sciences* 5, 4-16.
27. Crocombe RA. (2018) Portable spectroscopy. *Applied Spectroscopy* 72, 1701-51.
28. Wiedemair V, Huck CW. (2018) Evaluation of the performance of three hand-held near-infrared spectrometer through investigation of total antioxidant capacity in gluten-free grains. *Talanta* 189, 233-40.
29. Li M, Qian Z, Shi B, Medlicott J, East A. (2018) Evaluating the performance of a consumer scale SCiO™ molecular sensor to predict quality of horticultural products. *Postharvest Biology and Technology* 145, 183-92.
30. Meineri G, Candellone A, Masoero G, Peiretti PG. (2020) Smart NIR tomoscopy to predict oxidative stress in rabbits. *Progress in Nutrition*, 22(4).
31. Van Veen JA, van Overbeek LS, van Elsas JD. (1997) Fate and activity of microorganisms introduced into soil. *Microbiol. Mol. Biol. Rev.* 61, 121-35.
32. Van Nood E, Vrieze A, Nieuwdorp M, Fuentes S, *et al.* (2013) Duodenal infusion of donor feces for recurrent *Clostridium difficile*. *N. Engl. J. Med.*, 368, pp. 407-415.
33. Masoero G, Mazzinelli G, Balconi C, Locatelli S, Lanzanova C, Ardigò A, Giovannetti G, Volpato S, Nuti M. (2020) Spectroscopic Kernel Quality from a Symbiotic Corn Production. *Journal of Agronomy Research* 2 (4), 18-33.